

SydneyOlympicPark ○

Master Plan 2050

Summary



Image credit: Mark Gerada



Acknowledgement

We recognise First Nations Peoples' unique cultural and spiritual relationships to place and the rich contribution made to society.

First Nations People take a holistic view of land, sky, water, and culture and see them as one, not in isolation from each other. Sydney Olympic Park's approach is based on the premise upheld by First Nations People, that if we care for Country, it will care for us.

The lands and waterways of the Wangal extended along the southern side of the Burramattagal waters, the Parramatta River from Gadigal country, Darling Harbour to Baramada, today known as Parramatta.

The river continues to have a deep relationship with the Gadigal, Wangal, Toongagal, Wallumdegel, Wategora and the Burramattagal people. All enjoyed the river as an important source of cultural activities, food gathering, spiritual practice and trade over thousands of years. The salt marshes were shelter for the waterbirds. At high tide crabs would be caught and fish easily speared. Ducks inhabited the creeks that fed into the river.

According to the Lore of the Iyura, the people of this place, it is said Biiami was responsible for shaping the land. He created the rivers, creeks, mountains, the bush, and forests. Biiami raised up his arms and sang everything into being. He looked about the land he had created and called it Bembul-ra.

Then he created Iyura, setting humans in his place of creation. Lorees were put in place, so people lived the right way for the continuation of life. Ceremonies and practices, song, dance, and rules of behaviour brought balance and protected a way of life.

Sydney Olympic Park Authority acknowledges the Traditional Owners, Knowledge-holders and Custodians of the land, air and waters of this place we now call Sydney Olympic Park and pays respect to Elders past and present.

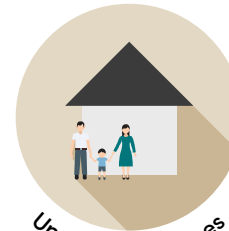
We embrace, recognise and respect Aboriginal and Torres Strait Islander culture as the world's oldest continuous living culture, which imparts belonging and richly contributes to a vibrant and sustainable future that can be shared by all Australians.





What we're delivering

By 2050, Sydney Olympic Park will deliver more for the community including:



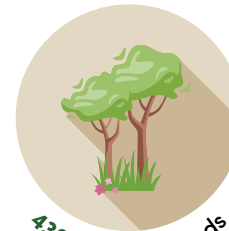
Up to **15,000** homes



Up to **26,000** jobs



5 Neighbourhoods & **2** Precincts



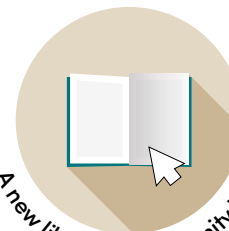
430 ha of parklands



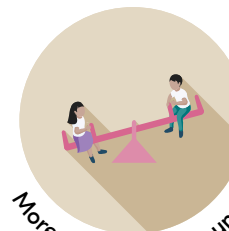
New school education sites



New community, sports & leisure centre



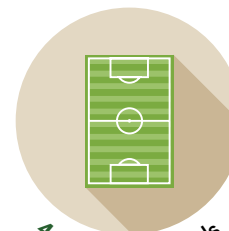
1 new library & community hub



More than **10** playgrounds



9 new public spaces



4 new sports fields



New retail & shops



'Car-lite' precinct

Overview

Master Plan 2050 builds on the 2050 Place Vision and Strategy which envisions Sydney Olympic Park as *Sydney's Beating Green Heart*.

Master Plan 2050 ensures there is a long-term development plan prepared for the whole of Sydney Olympic Park; this outlines the detailed controls to guide sustainable growth for the suburb.

We're excited to deliver Master Plan 2050, as it will benefit the local community by delivering more homes, job opportunities, community hubs and facilities, places to play and explore, new retail, and public spaces to support a vibrant and liveable community that is well-connected to greater Sydney.

Our plan is to make Sydney Olympic Park a thriving, everyday suburb and an even more attractive place for residents, workers, students and visitors.

Community engagement

In the lead up to the Master Plan 2050, Sydney Olympic Park Authority undertook extensive community research and engagement sessions to co-create a shared vision for the suburb captured in the 2050 Vision and Strategy.

During this time, we listened to thousands of Sydneysiders from our diverse local and visitor communities through engagement activities including interviews, focus groups, round table sessions, stakeholder meetings, workshops, surveys, and webinars, all centred around our #mySOP community engagement hub.

What we heard

The community reinforced their desire for the new Vision and Master Plan to care for Wangal Country, improve transport and connections, protect and enhance the parklands, and deliver sport and recreational outcomes.

We also heard the need for more housing and community infrastructure, and access to retail and services to provide for thriving neighbourhoods. Another focus area is the need for greater activation, to ensure Sydney Olympic Park is an active and vibrant everyday place.

Key themes from our community, customers and stakeholders include:

- Deliver a complete 'live, work and play' suburb.
- Improve active movement and transport networks.
- Meet the needs for a growing community.

- Develop an appropriate governance model for the future.
- Continue to be a world-class example of sustainability and innovation.
- Focus on arts and cultural participation, activation and production.
- Continue to be a place for sport, from community to elite.

The Community Engagement Outcome Report is available to read as an attachment to Master Plan 2050.

Care for Wangal Country, improve transport and connections, protect and enhance the parklands, and deliver sport and recreational outcomes.





What will change?

Master Plan 2050 will shape the development of Sydney Olympic Park to ensure it reaches its potential to:



Deliver a **diverse mix** of housing, with facilities for a growing neighbourhood.



Support **job growth** and the creation of diverse employment opportunities.



Enhance the **liveability** of the suburb to support healthy and resilient communities.



Support an **efficient transport network**, including connected and comfortable active transport routes to surrounding neighbourhoods.



Provide general controls and character statements about the suburb to ensure future development **improves** and **contributes** to the suburb.



Connect the parklands more closely to the urban centre.



What's staying the same?

Currently, over 23,000 people live, work and study within Sydney Olympic Park and each year, over 10 million visitors come for live music, sport, community festivals and for everyday retail, restaurants, and entertainment.

Our aspiration for the community and visitors stays the same, to ensure everyone has an incredible experience that's unique to this place.

Further development and activation of Sydney Olympic Park will only be undertaken while preserving:

- A meaningful and enduring connection with **Country**.
- Our position as a **premier destination** for cultural, entertainment, recreation and sporting **events**.
- Enhancement of **public spaces** and providing immersive and unique **experiences**.
- Protecting and enhancing Sydney Olympic Park's ecologically significant landscapes, **heritage** buildings and **parklands**.
- A **living lab** that continues to build on a legacy of innovation and experimentation from the Olympics with a focus on **urban development** and **placemaking**.

Neighbourhoods

Master Plan 2050 designates ten distinct character areas which are subcategorised as 'Neighbourhoods', 'Precincts' and 'Parklands'.

- Neighbourhoods contain the range of uses to support a significant residential population including job opportunities from retail spaces, childcare and community facilities, through to offices and commercial spaces.
- Precincts have a clear non-residential role generating activity and supporting sporting and cultural events.
- Parklands are natural spaces supporting our unique biodiversity as well as passive and active recreation for people.

Character statements have been created for each of these neighbourhoods to ensure the future development aligns with the aims, provisions and controls described in the Master Plan.

Visit [#mySOP](https://sydneyolympicpark.info/mySOP) Engage to download and read the full Master Plan 2050.
sydneyolympicpark.info/mySOP





Urban Centre

The Urban Centre will be the focal point for pedestrian vibrancy with easy access to active public transport networks. This dynamic hub will be the epicentre for conveniently located residential, retail and commercial activity – throughout the day and night.

A new landscaped Central Urban Park and Miluni Plaza will provide direct access to the Metro station. This lively space will be *the* place to gather and will serve as vital space for crowd management during events.

The State Abattoir heritage precinct will be transformed to include a library and multi-functional community spaces with supporting commercial uses. A new landscaped park between Herb Elliot Avenue and Figtree Drive will provide green open spaces for everyone to enjoy.

South of Figtree Drive will feature new residential buildings with opportunities for ground floor retail.



Eastern Neighbourhood

This visually striking high-density residential neighbourhood is conveniently located directly east of the Urban Centre, south of the Brickpit and east of Bicentennial Park.

A focal point for this neighbourhood is a new open space in the centre, with a lovely sunny location for a potential primary school. There is also the opportunity for additional indoor recreation facilities to be located at the corner of Australia Avenue and Murray Rose Avenue, providing increased amenities for the community.

The existing P6 car park will be redeveloped with new residential buildings overlooking the Brickpit and parklands. The provision of an ecological buffer between any future development on the P6 car park site and the southern edge of the Brickpit will ensure this important habitat area remains protected. A new pedestrian path will be provided along the southern edge of the Brickpit which will link to a fitness trail around this iconic space.



Southern Neighbourhood

This neighbourhood is the southern extension of the Urban Centre and forms part of the gateway connecting Sydney Olympic Park to Homebush Bay Drive.

A new pedestrian and cyclist bridge is proposed over Sarah Durack Avenue to provide convenient and safe access to the Urban Centre and the new Metro station. Spaces for new shops and services will be located at the base of the bridge for maximum visibility and easy access.

The public will have greater access to the southern sports oval next to Boundary Creek which will be enhanced to provide new recreational opportunities.

The neighbourhood will retain 720 public car park spaces for events, and it will minimise freight vehicle movements by accommodating a micro-freight transfer hub for deliveries and distribution within the suburb.



Haslams Neighbourhood

This compact urban neighbourhood will be located on the edge of Haslams Creek and to the west of Sydney SuperDome. Overlooking the greenery and onto creek, this trendy neighbourhood compliments the newer developments in the Carter Street Precinct.

Over time, the existing waste service facility and coach parking will be redeveloped into a green and leafy residential neighbourhood with shared courtyards, tree lined streets and a new centrally located park. A neighbourhood centre, accommodating shops, childcare and other local services, will be located adjacent to the new park.

The neighbourhood will be characterised by residential and mixed-use buildings, ranging in height from 6 to 20 storeys to maximise solar access to the park and view sharing to the parklands.



Edwin Flack Neighbourhood

Located on the edge of Sydney Olympic Park, this neighbourhood provides a transition to the higher density development within the Carter Street Precinct to the west.

Residential development in this neighbourhood will include student housing and visitor accommodation.

Restaurants, local services and businesses will open to support this lively neighbourhood. Urban tree canopy and a new park at the corner of Edwin Flack Avenue and Shale Street will provide amenity to residents, workers and visitors alike.

The neighbourhood is adjoined by large stadiums and sports venues located within the Stadia, and Sports and Civic Precincts.



Sports and Civic Precinct

By 2050, several of our world-class competitive sports venues will be expanded, redeveloped and enhanced to meet the needs of the changing community.

Dawn Fraser Avenue will become a dedicated light rail corridor, with a new cultural centre at the key intersection of Olympic Boulevard. This new iconic landmark will accommodate a range of art and cultural uses.

A new non-government school may be provided along Sarah Durack Avenue as well as new recreation spaces to serve the growing community. There will also be a renewed focus on Boundary Creek, activating a lush green corridor with soft landscaping and a new playground.

Part of the existing P4 car park will be redeveloped and has the potential for depots and buildings capable of accommodating emergency services, innovative recycling facilities, renewable energy storage and creative industries.



Stadia Precinct

Sydney Olympic Park is best-known for our landmark stadiums. The Stadia Precinct will continue to amplify the enduring legacy of the Sydney 2000 Olympic and Paralympic Games and host premier events in entertainment and sports.

The arrival experience to the stadia will be renewed by the transformation of Olympic Boulevard with lush greenery and water elements to reduce rising heat impacts and enhance biodiversity. The street network will be designed to create a car-free connection between the Urban Centre and Metro station, Stadium Australia and Cathy Freeman Park.

Sydney Showground will become more open, with easy access streets for the public. It will transform into a year-round destination to bring everyday life into the precinct and along Olympic Boulevard with new opportunities for hotels and hospitality including eateries and bars.



Bicentennial Park

Bicentennial Park has been a green asset for the whole of Sydney for more than 35 years and includes the Badu Mangroves' estuarine wetlands, and Lake Belvedere. These areas offer a wealth of outdoor activities for the community including cycling paths, running clubs, outdoor gym equipment and nature appreciation. Facilities in the parklands include picnic areas, playgrounds, barbecues, car parks, a dog exercise area, boardwalks, bird hides, a function centre, and a café. Areas within Bicentennial Park can also be hired for social gatherings, weddings and community events.

Future development in this area of the parklands will focus on small-scale, low-intensity improvements, preserving its main purpose as a public open space for informal leisure and nature conservation. Connections to nearby urban areas will be strengthened to accommodate growing populations in the surrounding neighbourhoods. The parklands will continue to provide a wide range of recreational experiences, with a strong emphasis on conserving the ecological values of the Badu Mangroves, ensuring the area remains both a leisure and conservation asset for future generations.



Riverfront Park

Riverfront Park is a collection of diverse spaces that share a strong connection to the Parramatta River.

Beloved by the community, Blaxland Riverside Park will be enhanced with more playgrounds and facilities.

Newington Armory will be reimagined as a vibrant destination to celebrate history, culture and appreciate the quiet respite that nature offers. Visitors will come to discover and explore the unique heritage buildings and spend time with friends and family at spaces that allow for play, creativity, recreation and social gatherings. It will be a place to celebrate First Nations culture and the Wangal people's continuing connection to Country.

The Parramatta River heritage wharf will be the key arrival point to Newington Armory with potential for direct water transport services. The area to the north of Woo-la-ra will be the site of the future light rail, with the surrounding land being redesigned to support recreational use. A series of pocket parks will be installed to continue supporting small birds and other wildlife in the area.



Haslams Park

Located in the heart of the parklands, this area includes Haslams Creek, Wentworth Common, Archery Park, the Brickpit, Narawang Wetland, and Parklands Junction.

The Haslams Park precinct supports our rich biodiversity and provides recreational opportunities for visitors and the community. A network of walkways, cycle paths, and roads connects the parklands to the wider suburb and regional routes, allowing visitors to explore these unique habitats.

Conservation efforts will continue with revegetation projects in the Haslams Creek corridor and Little Kronos Hill. Improved pedestrian and cyclist pathways around the Brickpit will enhance accessibility while the former Brickpit substation will be used as a community facility.

A new recreation hub at the centre of Haslams Park will feature new sports fields, and a pump track alongside the existing BMX track. As public transport networks grow, parts of the car park along Hill Road will be transformed into recreational spaces. Open lawns, picnic areas, playgrounds, and courts will become available, providing outdoor leisure opportunities in a nature-rich setting, while protecting the ecological surroundings.



Key outcomes

Homes, residents & workers

By 2050, Sydney Olympic Park is set to accommodate over 33,000 new residents with a focus on creating liveable and sustainable communities. New residential neighbourhoods will surround a vibrant Urban Centre providing jobs and business opportunities, lively streets, diverse retail offerings and local and regional public transport connections.

Master Plan 2050 leverages the investment in Sydney Metro West and the proposed Parramatta Light Rail Stage 2 to reimagine Sydney Olympic Park as a well-connected and liveable suburb that is adaptive and resilient to our changing climate.

Active movement and transport

An enhanced transport network will complement the significant public transport investment at Sydney Olympic Park. Improved pedestrian and cycling connections will be provided to encourage public and active transport use and enable the Urban Centre to become car-lite and pedestrian focused.

These networks will provide new connections to the surrounding residential neighbourhoods to access local retail, schools and public transport and connect into the parklands, the Parramatta River foreshore, Newington Armory and Brickpit Park. New active transport bridges will provide easy access routes and connect residents and visitors to the Urban Centre and Bicentennial Park.

“New active transport bridges will provide easy access routes and connect residents and visitors to the Urban Centre and Bicentennial Park.”



Image Credit: SJB

Community infrastructure

Master Plan 2050 promotes efficient land development, amenity to development and public spaces, improved access and provision of new open public spaces and community facilities.

Residents, workers and visitors will be able to enjoy easy access to district-scale open spaces, educational and community institutions, sports fields and facilities and recreational pedestrian and cycling circuits within Sydney Olympic Park.

Potential new schools and education facilities, subject to future funding, are planned to meet the educational demands of families living in and around Sydney Olympic Park. Schools will be co-located with open spaces and will be important focal points for the community. Childcare centres and other critical services will be provided within neighbourhoods to cater for the needs of residents and workers.

Retail spaces

Master Plan 2050 fosters development for a thriving Urban Centre that is active throughout the day and night. By supporting a mix of night-time retail offerings and activities, Sydney Olympic Park will be able to provide for the diverse social and cultural needs of the community.

Located moments from Sydney Olympic Park Metro station and the existing train station, these high-quality retail and hospitality experiences will contribute to the distinct character of the Urban Centre. Locals and visitors will be able to walk and cycle through the pedestrian friendly neighbourhoods to visit local services such as corner shops and cafes, and playgrounds, all within a 15-minute walking radius from the Urban Centre.



SydneyOlympicPark

Read more at: sydneyolympicpark.nsw.gov.au/master-plan

Join the community at mySOP Engage!
Click 'follow' on projects that are meaningful
to you and contribute your ideas to help
shape the Park.



Scan the QR code or visit:
sydneyolympicpark.info/mySOP

#mySOP    